

## Application Note

### Hi-Speed USB to IDE Bridge Controller (PL-2506/PL-2507/PL-3507) One Button Backup Utility User's Manual (for version 3.2.0.0 & above)

#### Introduction

One Button Backup Utility Application is designed to launch a Backup application when pressing the PL-2506/PL-2507/PL-3507 backup button. Please contact Prolific FAE for the latest version of this utility. Also refer to the ReadMe file of the OBB software for the version change information.

#### System Requirements

One Button Backup Utility requires the following to operate:

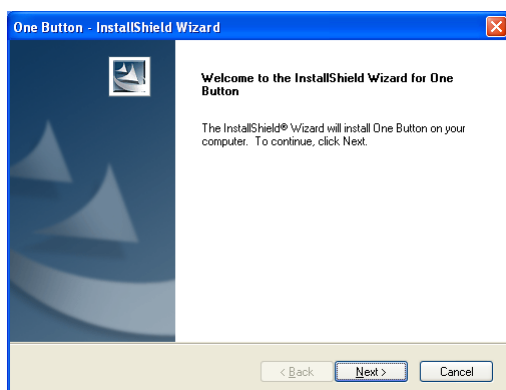
- Operation System: Windows 98/ME/2000/XP
- Supported Controller: PL-2506 / PL-2507 / PL-3507
- Supported Language: English
- Administrator privilege required for installation in Windows 2000/XP

#### Installation

- Normal mode:  
Run **OneButton\_Generic\_3200.exe** directly. (Or above versions executable file)
- Silent mode:  
Use '**OneButton\_Generic\_3200.exe -s**', (Or above versions executable file)

#### One Button Utility Components

**Prolific One Button Backup Setup:**



**Program Folder:**



### System Tray Icon:



- **Installed Components:**
  - OneButton Application will be installed on <Program Files>\Prolific\One Button.
  - Backup Application will be installed on <Program Files>\Prolific\One Button.
  - USB mass storage driver for PL-2506/PL-2507/PL-3507 device in Win98
  - Window service, PLFlash DeviceControl Service, to enable user without administrator privilege to execute the application in Win2000/XP.

## Launching the One Button Backup Utility

There are different ways to launch the One Button Backup Utility:

- Click "Start\Program Files\Prolific Backup\PLBackup" will launch the application.
- Press the back up button on PL-2506/PL-2507/PL-3507 device will launch the application.
- Double click the system tray icon (auto-backup) will launch the application.
- Click right button on the tray icon will show a menu as following:
  - About: to show the about dialog box of this application.
  - Exit: to exit the program.



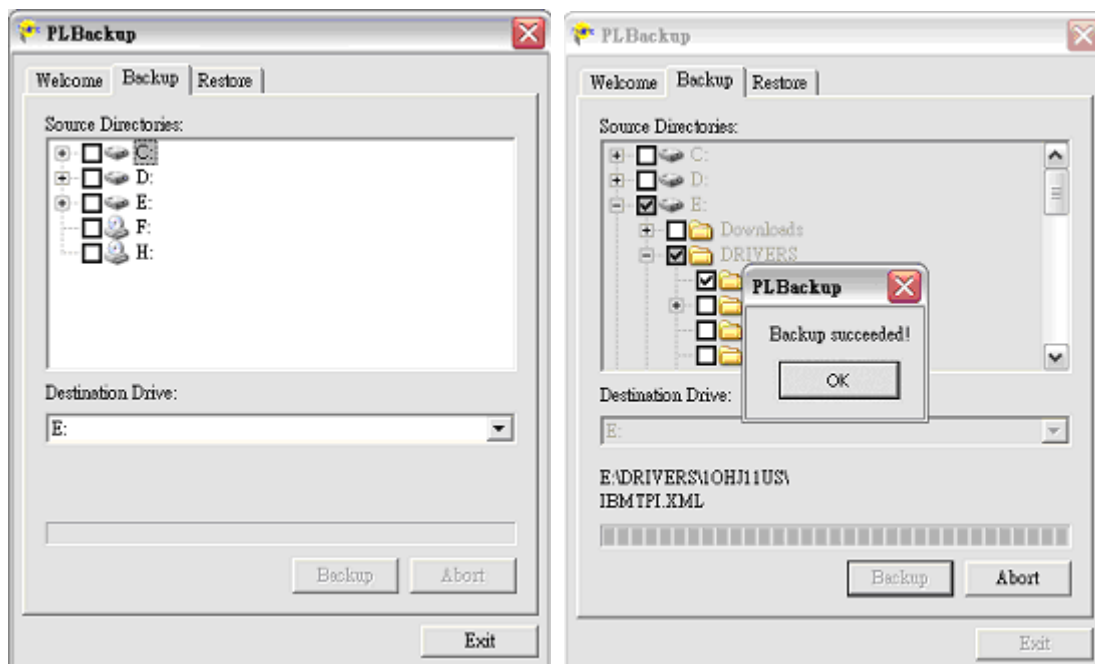
## Create Backup Files

To create backup files, please follow the steps below:

1. Click on the Create backup files icon or click on the Backup tab folder.



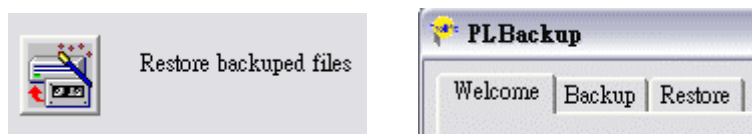
2. Inside the main page of the Backup folder, you will find the following options:
  - Source Directories: Select the directories you want to backup.
  - Destination Drive: Select the drive you want to save the backup files.
  - Click the "Backup" button to make the backup files.
  - Click the "Abort" button if you want to abort the backup operation.



## Restore Backup Files

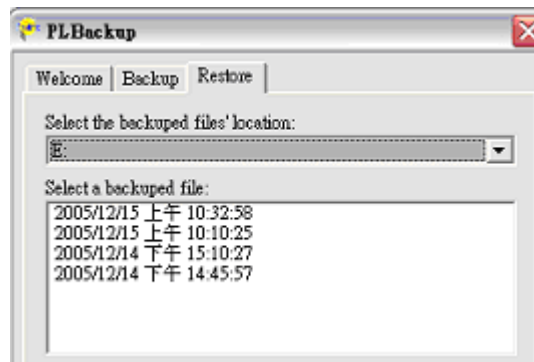
This section will teach you how to restore the backup files:

1. Click on the Restore backup files icon or in the Restore tab folder.

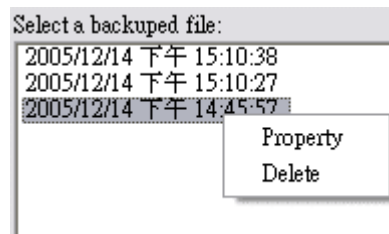


2. Inside the main page of the Restore folder, you will find the following:

- Select the “Backup Files’ Location” where the backup files are saved.



- Select a “Backup File” you want to restore from the backup files list. You can check each backup files property or delete it by clicking the right button of your mouse. The “Property” shows the path of the “Backup Directory” of the backup file.



- The backup files will be restored to its original directory by default. Click the “Restore” button to restore the backup files to its original directory.

