

QFlash_PCIE User Guide

Ver. QFlash_PCIE_User_Guide_V1.0

Date: 2020-07-31

Status: Released



Our aim is to provide customers with timely and comprehensive service. For any assistance, please contact our company headquarters:

Quectel Wireless Solutions Co., Ltd.

Building 5, Shanghai Business Park Phase III (Area B), No.1016 Tianlin Road, Minhang District, Shanghai 200233, China

Tel: +86 21 5108 6236 Email: info@quectel.com

Or our local office. For more information, please visit: <http://www.quectel.com/support/sales.htm>.

For technical support, or to report documentation errors, please visit:

<http://www.quectel.com/support/technical.htm> or email to support@quectel.com.

GENERAL NOTES

QUECTEL OFFERS THE INFORMATION AS A SERVICE TO ITS CUSTOMERS. THE INFORMATION PROVIDED IS BASED UPON CUSTOMERS' REQUIREMENTS. QUECTEL MAKES EVERY EFFORT TO ENSURE THE QUALITY OF THE INFORMATION IT MAKES AVAILABLE. QUECTEL DOES NOT MAKE ANY WARRANTY AS TO THE INFORMATION CONTAINED HEREIN, AND DOES NOT ACCEPT ANY LIABILITY FOR ANY INJURY, LOSS OR DAMAGE OF ANY KIND INCURRED BY USE OF OR RELIANCE UPON THE INFORMATION. ALL INFORMATION SUPPLIED HEREIN IS SUBJECT TO CHANGE WITHOUT PRIOR NOTICE.

DISCLAIMER

WHILE QUECTEL HAS MADE EFFORTS TO ENSURE THAT THE FUNCTIONS AND FEATURES UNDER DEVELOPMENT ARE FREE FROM ERRORS, IT IS POSSIBLE THAT THESE FUNCTIONS AND FEATURES COULD CONTAIN ERRORS, INACCURACIES AND OMISSIONS. UNLESS OTHERWISE PROVIDED BY VALID AGREEMENT, QUECTEL MAKES NO WARRANTIES OF ANY KIND, IMPLIED OR EXPRESS, WITH RESPECT TO THE USE OF FEATURES AND FUNCTIONS UNDER DEVELOPMENT. TO THE MAXIMUM EXTENT PERMITTED BY LAW, QUECTEL EXCLUDES ALL LIABILITY FOR ANY LOSS OR DAMAGE SUFFERED IN CONNECTION WITH THE USE OF THE FUNCTIONS AND FEATURES UNDER DEVELOPMENT, REGARDLESS OF WHETHER SUCH LOSS OR DAMAGE MAY HAVE BEEN FORESEEABLE.

COPYRIGHT

THE INFORMATION CONTAINED HERE IS PROPRIETARY TECHNICAL INFORMATION OF QUECTEL WIRELESS SOLUTIONS CO., LTD. TRANSMITTING, REPRODUCTION, DISSEMINATION AND EDITING OF THIS DOCUMENT AS WELL AS UTILIZATION OF THE CONTENT WITHOUT PERMISSION ARE FORBIDDEN. OFFENDERS WILL BE HELD LIABLE FOR PAYMENT OF DAMAGES. ALL RIGHTS ARE RESERVED IN THE EVENT OF A PATENT GRANT OR REGISTRATION OF A UTILITY MODEL OR DESIGN.

Copyright © Quectel Wireless Solutions Co., Ltd. 2020. All rights reserved.

About the Document

Revision History

Version	Date	Author	Description
1.0	2020-07-31	Kidd CHEN	Initial

Contents

About the Document	2
Contents	3
Figure Index	4
1 Introduction	5
1.1. Operating System and Tool Version	5
1.2. Applicable Modules	5
1.3. About QFlash_PCIE Tool	6
2 Firmware Upgrade Procedure	7
2.1. Configure Serial Port and Baud Rate	7
2.1.1. Set COM Port	8
2.1.2. Set Baud Rate	9
2.2. Load Firmware Upgrade Files	10
2.3. Upgrade Firmware	11

Figure Index

Figure 1: “About This Tool”	6
Figure 2: Main Interface of QFlash_PCIE	7
Figure 3: Select the Correct Serial Port	8
Figure 4: Select the Baud Rate	9
Figure 5: Select the Target File	10
Figure 6: Click the “Start” Button.....	11
Figure 7: Firmware is Being Upgraded	12
Figure 8: Upgrade Result	13

1 Introduction

1.1. Operating System and Tool Version

This document mainly introduces how to upgrade a firmware with “QFlash_PCIE”, an upgrade tool provided by Quectel. The tool can run on a computer without installation if the operating system is Windows 10.

Any newer version of the tool and notification thereof will be provided in advance.

NOTE

Do NOT contain any space in the storage path of QFlash_PCIE, otherwise, the upgrade may fail. Choose English characters preferably for the storage path.

1.2. Applicable Modules

QFlash_PCIE is applicable to the following Quectel modules.

LTE-A Module Series	EM1x0R: EM160R-GL/EM120R-GL
---------------------	-----------------------------

1.3. About QFlash_PCIE Tool

The information about QFlash_PCIE developed by Quectel is shown as below. Click **“About This Tool”** under **“Help”** in the toolbar to view this window.



Figure 1: “About This Tool”

NOTE

Run QFlash_PCIE by right-clicking and choosing **“Run as administrator”**, otherwise the tool may fail to run other .exe tools.

2.1.1. Set COM Port

Click the **“COM Port”** drop-down list to select a COM port for upgrading your firmware, as shown in the following figure.

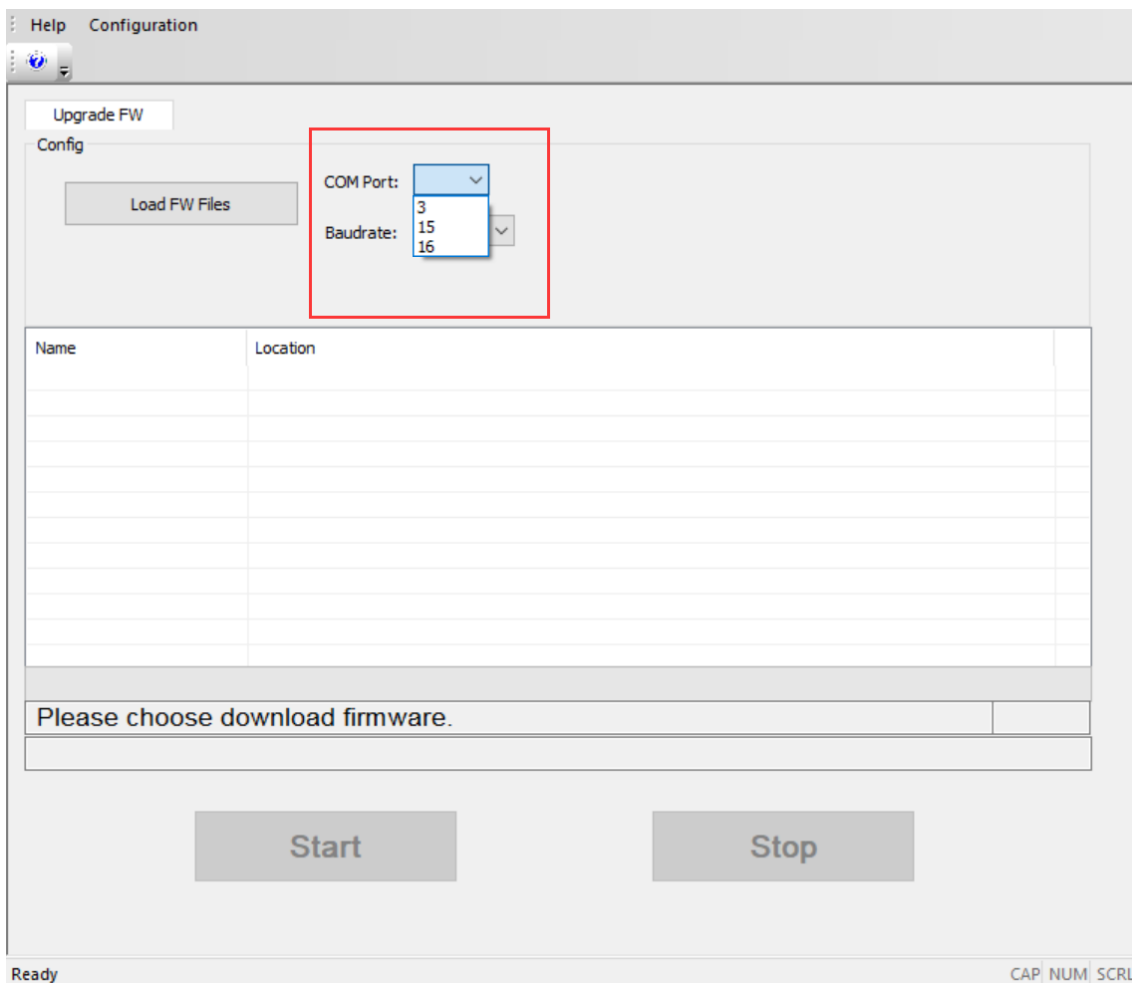


Figure 3: Select the Correct Serial Port

NOTES

1. The COM ports correspond to PORTS (COM & LPT) in the device manager of your computer.
2. For EM160R-GL or EM120R-GL module, you need to turn the module to the PCIe mode, select the Quectel UDE DM port to upgrade.

2.1.2. Set Baud Rate

Click the “**Baudrate**” drop-down list to select a baud rate, as shown in the following figure.

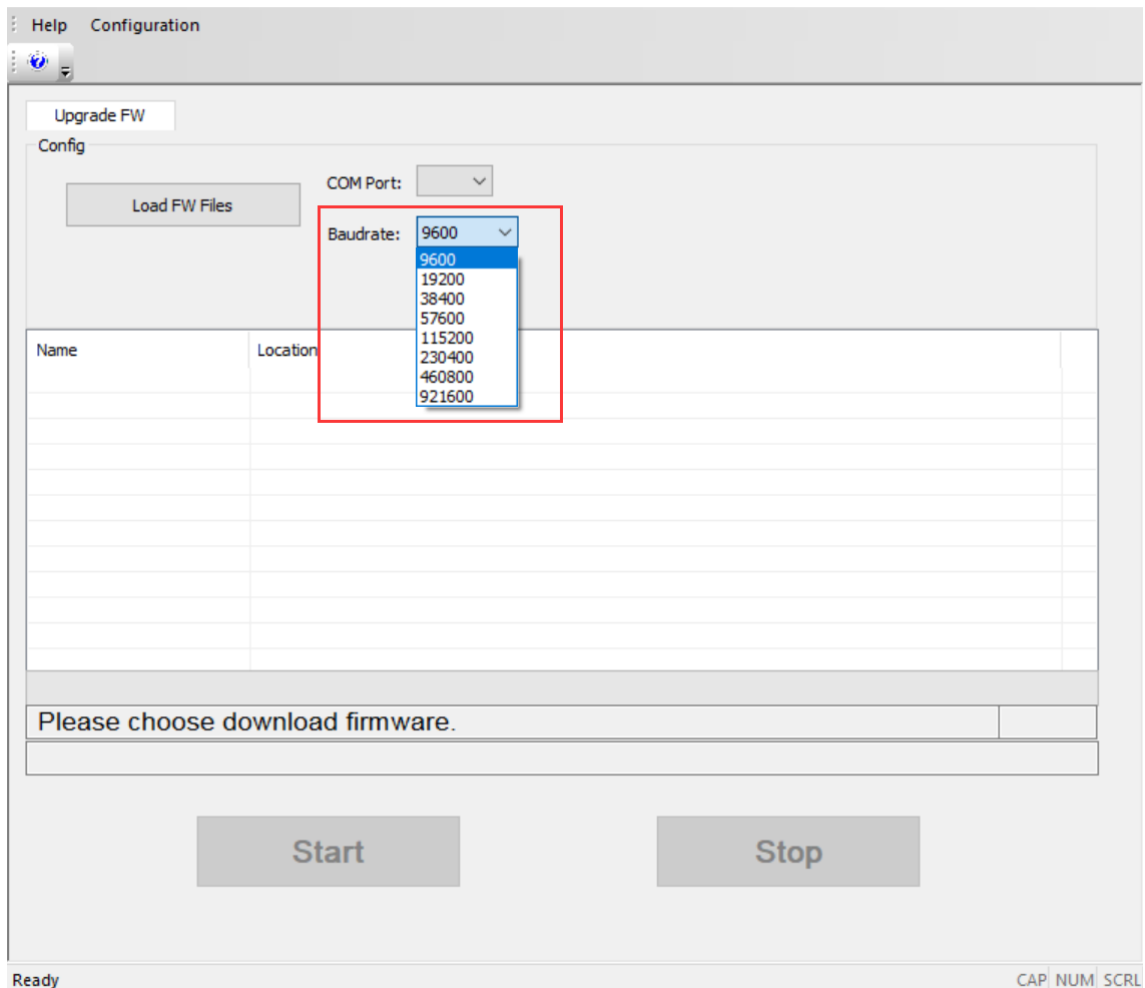


Figure 4: Select the Baud Rate

2.2. Load Firmware Upgrade Files

Click the button “**Load FW Files**”, and select a target file with the extension “.mbn” that needs to be downloaded to the module, as shown in the following picture.

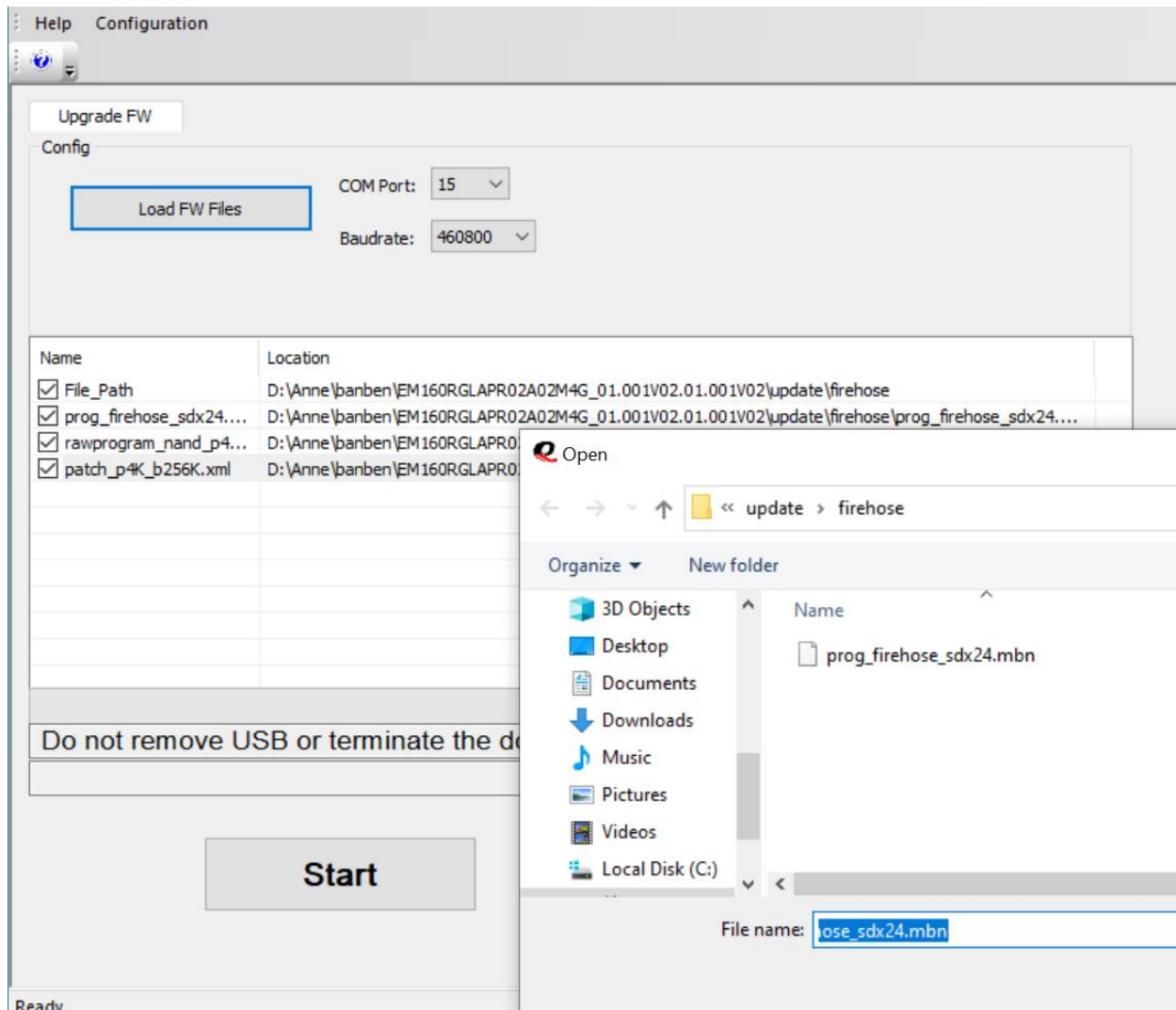


Figure 5: Select the Target File

NOTE

Do NOT contain any space in the storage path of the firmware, otherwise, the upgrade may fail. Choose English characters preferably for the storage path.

2.3. Upgrade Firmware

1. Click the “**Start**” button to start the firmware upgrade.

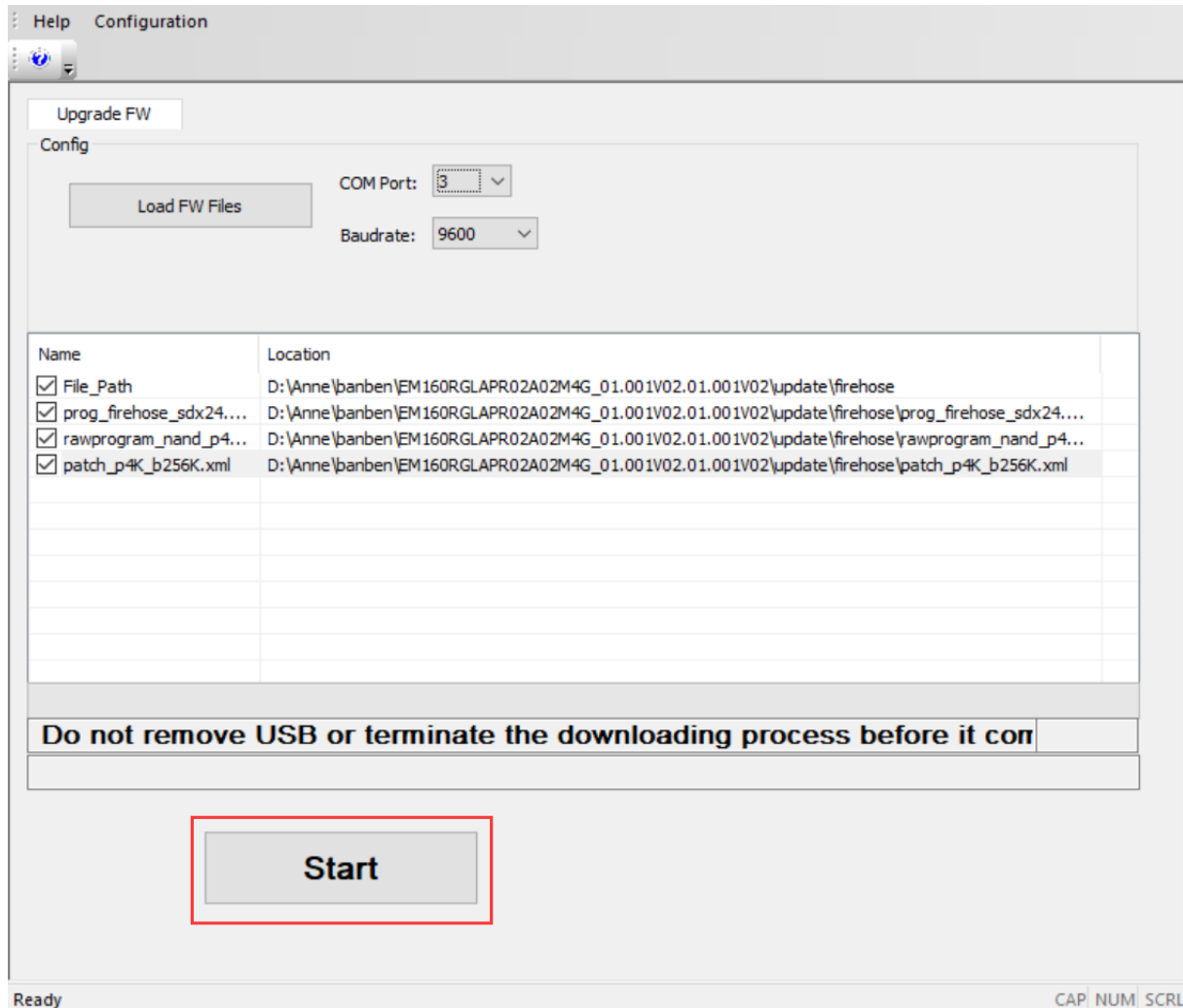


Figure 6: Click the “Start” Button

NOTES

1. The EM160-GL and EM120-GL modules support Firehose upgrade.
2. If the upgrade in the Firehose mode fails after several attempts, please try to turn off your anti-virus software and firewall or uninstall them, and then try it again.
3. Do not remove USB or terminate the downloading process before it completes.

The interface when the firmware is being upgraded is shown as below.

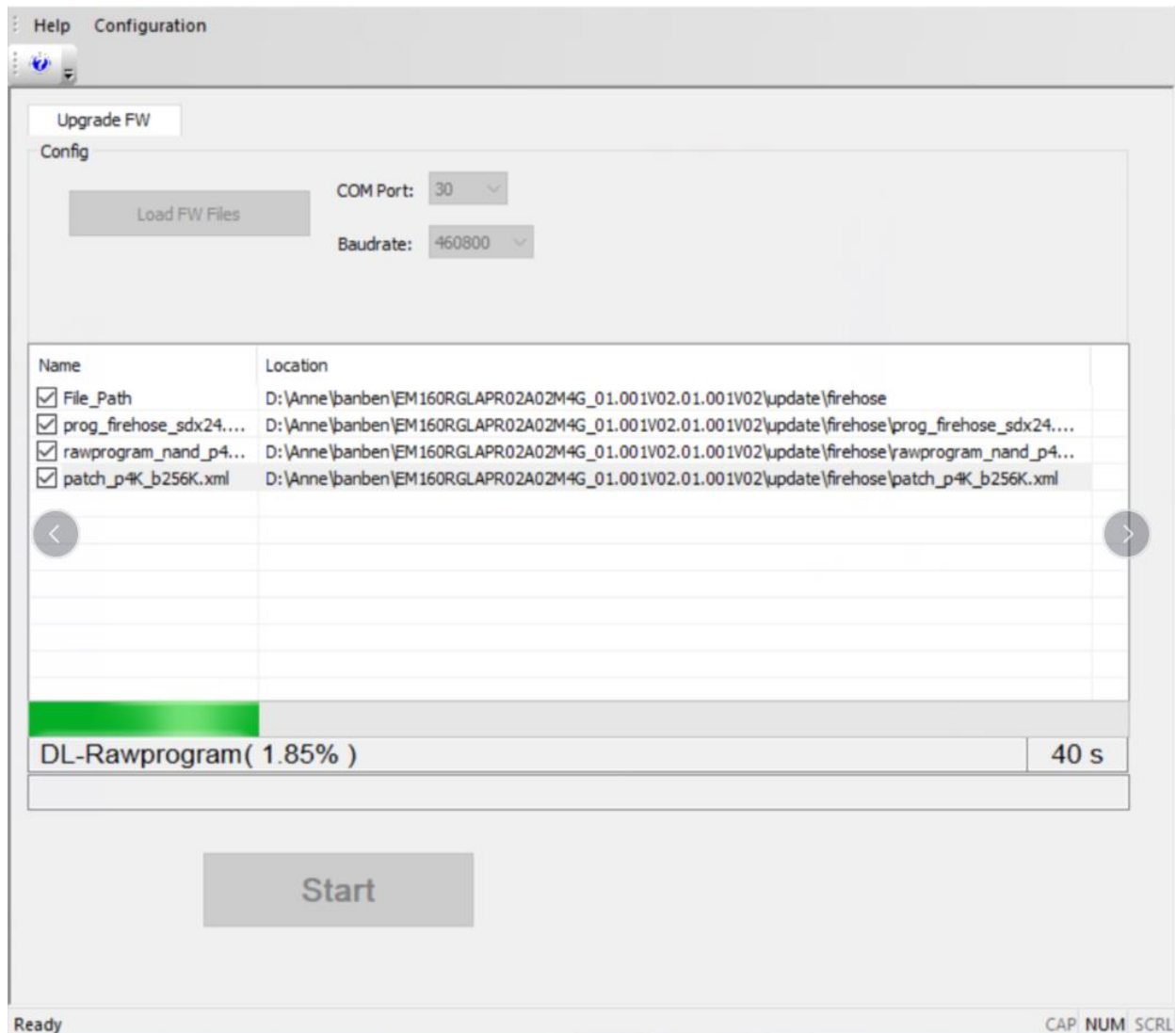


Figure 7: Firmware is Being Upgraded

NOTE

If there is a QModeSwitch.exe prompt box, please click “Yes” to continue the process.

2. "PASS" is shown on the interface if the firmware is successfully upgraded, as shown in the following figure.

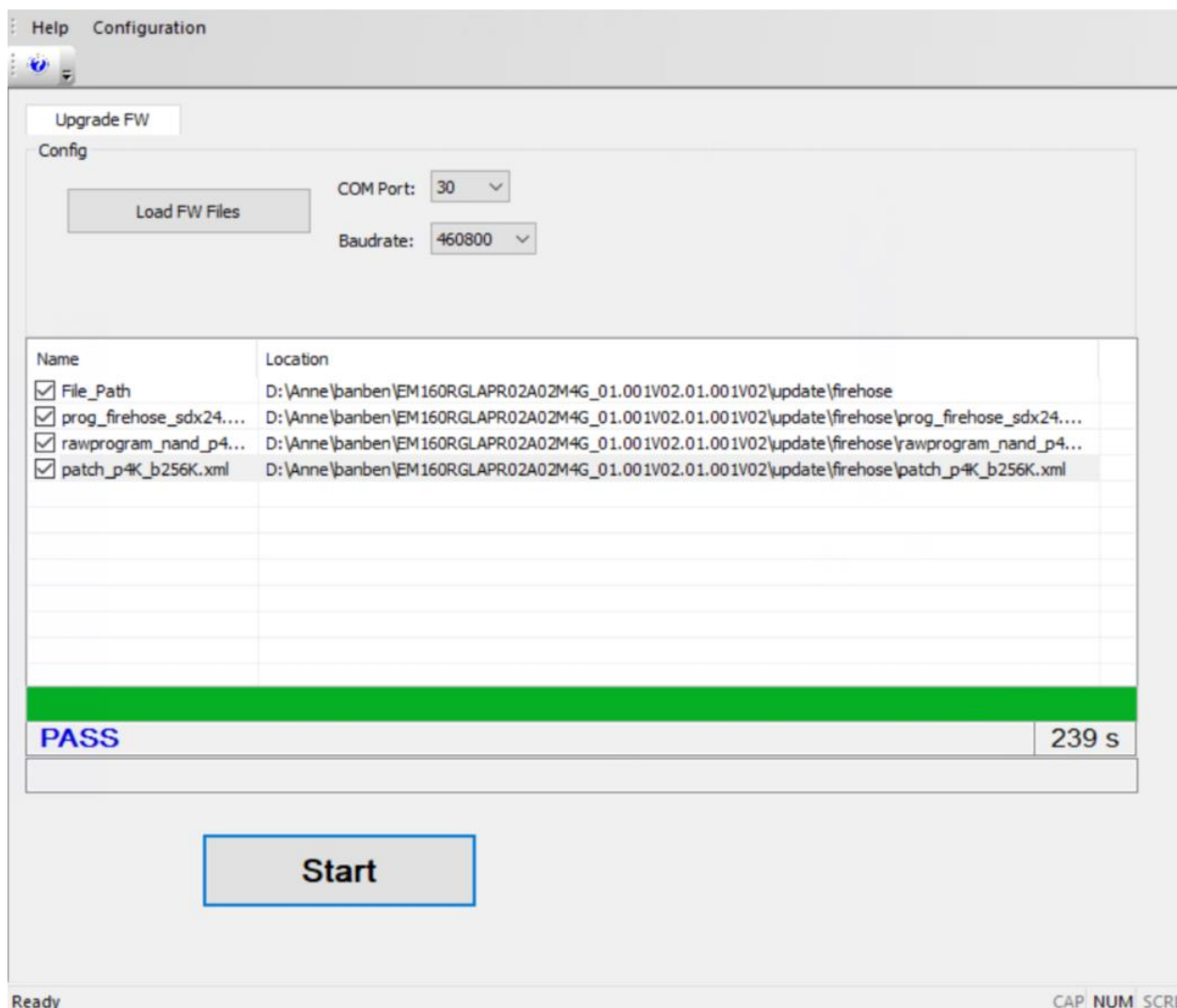


Figure 8: Upgrade Result