

LTE Windows USB Driver RNDIS Installation Guide

LTE Standard/Automotive Module Series

Rev. LTE_Windows_USB_Driver_RNDIS_Installation_Guide_V1.0

Date: 2019-12-04

Status: Released

Our aim is to provide customers with timely and comprehensive service. For any assistance, please contact our company headquarters:

Quectel Wireless Solutions Co., Ltd.

Building 5, Shanghai Business Park Phase III (Area B), No.1016 Tianlin Road, Minhang District, Shanghai, China 200233

Tel: +86 21 5108 6236

Email: info@quectel.com

Or our local office. For more information, please visit:

<http://www.quectel.com/support/sales.htm>

For technical support, or to report documentation errors, please visit:

<http://www.quectel.com/support/technical.htm>

Or email to: support@quectel.com

GENERAL NOTES

QUECTEL OFFERS THE INFORMATION AS A SERVICE TO ITS CUSTOMERS. THE INFORMATION PROVIDED IS BASED UPON CUSTOMERS' REQUIREMENTS. QUECTEL MAKES EVERY EFFORT TO ENSURE THE QUALITY OF THE INFORMATION IT MAKES AVAILABLE. QUECTEL DOES NOT MAKE ANY WARRANTY AS TO THE INFORMATION CONTAINED HEREIN, AND DOES NOT ACCEPT ANY LIABILITY FOR ANY INJURY, LOSS OR DAMAGE OF ANY KIND INCURRED BY USE OF OR RELIANCE UPON THE INFORMATION. ALL INFORMATION SUPPLIED HEREIN IS SUBJECT TO CHANGE WITHOUT PRIOR NOTICE.

COPYRIGHT

THE INFORMATION CONTAINED HERE IS PROPRIETARY TECHNICAL INFORMATION OF QUECTEL WIRELESS SOLUTIONS CO., LTD. TRANSMITTING, REPRODUCTION, DISSEMINATION AND EDITING OF THIS DOCUMENT AS WELL AS UTILIZATION OF THE CONTENT ARE FORBIDDEN WITHOUT PERMISSION. OFFENDERS WILL BE HELD LIABLE FOR PAYMENT OF DAMAGES. ALL RIGHTS ARE RESERVED IN THE EVENT OF A PATENT GRANT OR REGISTRATION OF A UTILITY MODEL OR DESIGN.

Copyright © Quectel Wireless Solutions Co., Ltd. 2019. All rights reserved.

About the Document

History

Revision	Date	Author	Description
1.0	2019-12-04	Isaac WANG	Initial

Contents

About the Document.....	2
Contents	3
Table Index.....	4
Figure Index	5
1 Introduction	6
1.1. Applicable Products	6
2 Installation	7
2.1. Preparation.....	7
2.2. Installation Procedures	8
2.3. Check on Installation Result	13
2.4. Test.....	15
3 Uninstallation	16
3.1. Uninstallation Procedures	16
3.2. Check on Uninstallation Result.....	20
4 Appendix A References.....	21

Table Index

TABLE 1: APPLICABLE MODULE	6
TABLE 2: TERMS AND ABBREVIATIONS	21

Figure Index

FIGURE 1: INSTALLATION PREPARATION.....	8
FIGURE 2: CHOOSE INSTALLATION PATH	9
FIGURE 3: COPYING FILES	10
FIGURE 4: INSTALLING	11
FIGURE 5: COMPLETE INSTALLATION	12
FIGURE 6: DEVICE MANAGER WHEN DRIVER INSTALLATION SUCCEEDED.....	13
FIGURE 7: DRIVER NOT INSTALLED OR INSTALLATION FAILED	14
FIGURE 8: MODULE TEST VIA QNAVIGATOR	15
FIGURE 9: UNINSTALL THE DRIVER.....	16
FIGURE 10: UNINSTALLATION PREPARATION	17
FIGURE 11: CONFIRM UNINSTALLATION	17
FIGURE 12: AUTOMATIC UNINSTALLATION	18
FIGURE 13: DRIVER UNINSTALLATION PROGRESS	18
FIGURE 14: UNINSTALLATION COMPLETE.....	19
FIGURE 15: DEVICE MANAGER WHEN DRIVER UNINSTALLATION SUCCEEDED	20

1 Introduction

This document illustrates how to install and uninstall the USB RNDIS driver for Quectel modules running on Windows operating systems, with provided installation package.

The installation package (*Quectel_LTE_Windows_USB_Driver_RNDIS*) supports Windows 7, Windows 8 and Windows 10 operating systems. In this document, the operation in Windows 10 is mainly taken as an example.

1.1. Applicable Products

This document is applicable to the following specific Quectel modules shown in the following table.

Table 1: Applicable module

Module Series		Modules
LTE	LTE Standard	● EC2x: EC25/EC21/EC20 R2.0/EC20 R2.1
	Automotive	● AGxx: AG35

2 Installation

This chapter mainly describes how to install the driver with the provided installation package.

NOTE

Please contact Quectel technical support for the latest installation package in advance.

2.1. Preparation

Before installing the driver, please make sure that the module is connected to the computer and powered up. If no Quectel driver has ever been installed in the system, a prompt indicating that the driver of the new module needs updating may appear. In this case, please ignore the prompt and start the installation as described in **Chapter 2.2**.

2.2. Installation Procedures

This chapter describes the installation process of *Quectel_LTE_Windows_USB_Driver_RNDIS*. The detailed steps are as follows:

1. Installation Preparation

Open the installation package, double click the installation program *setup.exe*, Then, as shown in the following figure, the “Preparing to Install...” box will be displayed.

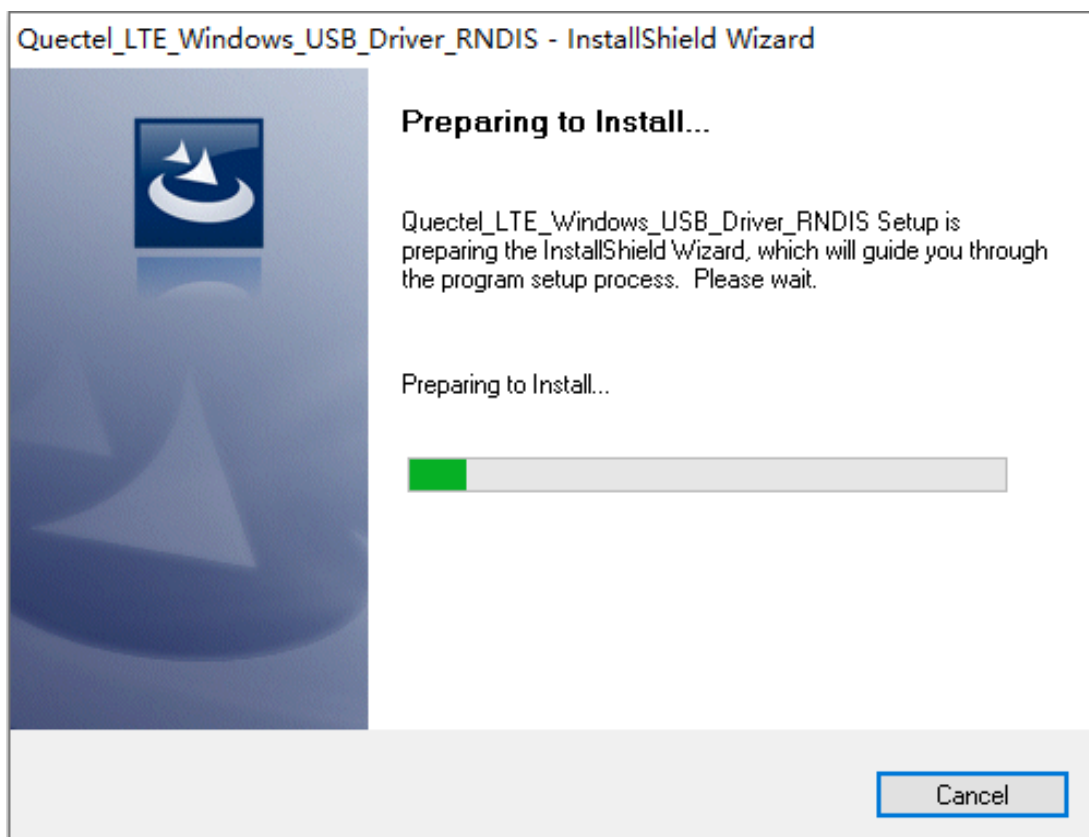


Figure 1: Installation Preparation

2. Choose Destination Location

Please click “**Next**” straightforward to install the driver to the default installation location. If it is needed to change the location, please select the custom installation location by clicking “**Browse...**”.

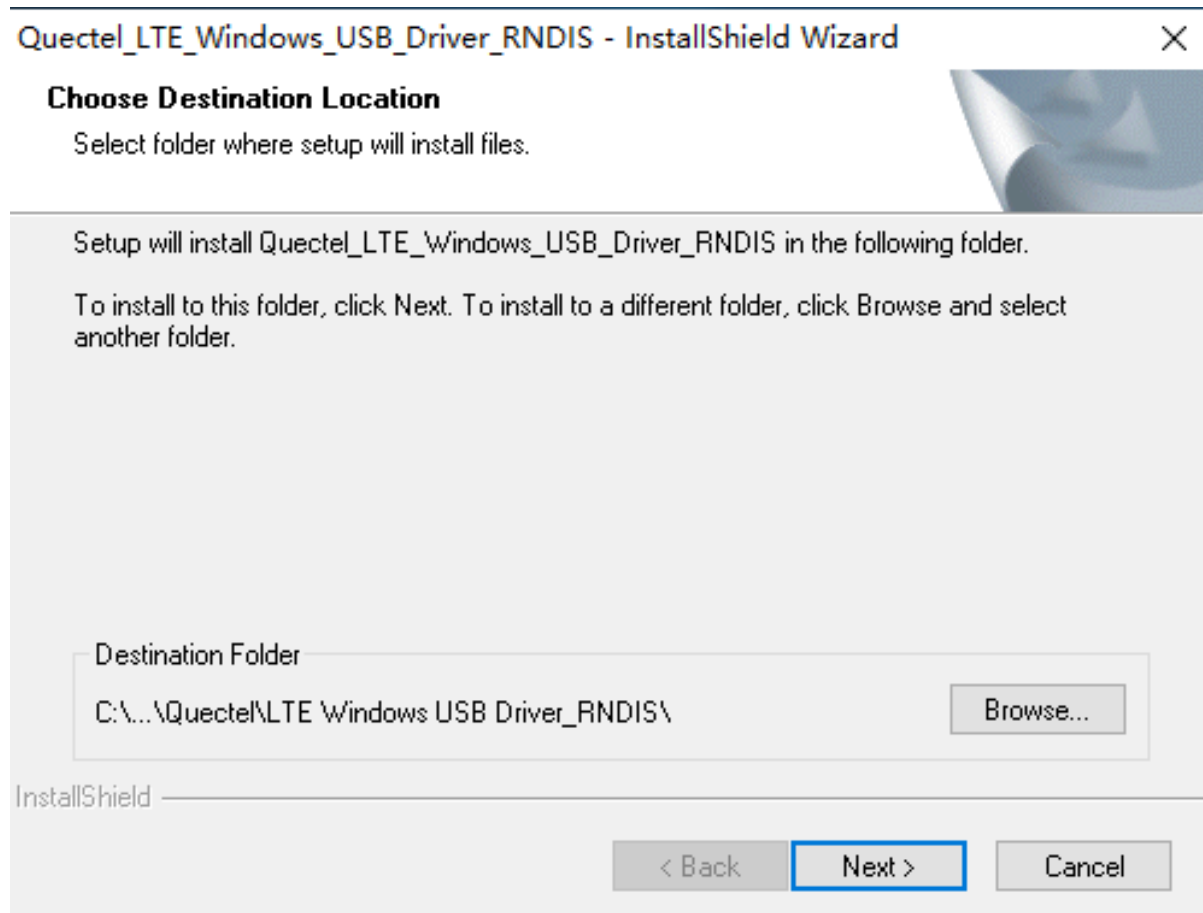


Figure 2: Choose Installation Path

3. Starting File Copying

When the following window appears, click **“Next”**. Then, the program will automatically start copying the driver files needed for the installation.

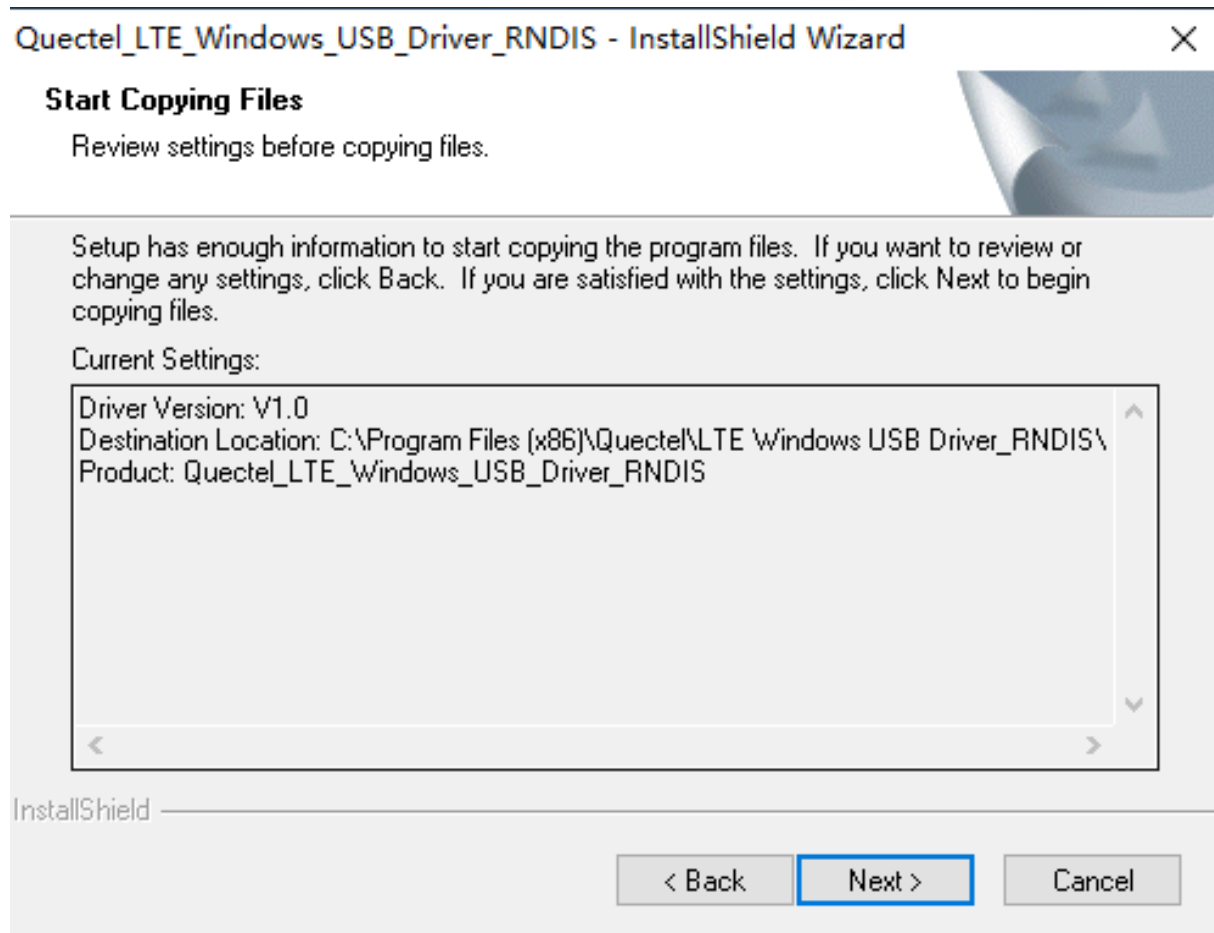


Figure 3: Copying Files

4. Installing

After the files copying is complete, the driver will be installed automatically, as shown below. The setup process may take some time, please wait patiently until it is finished.

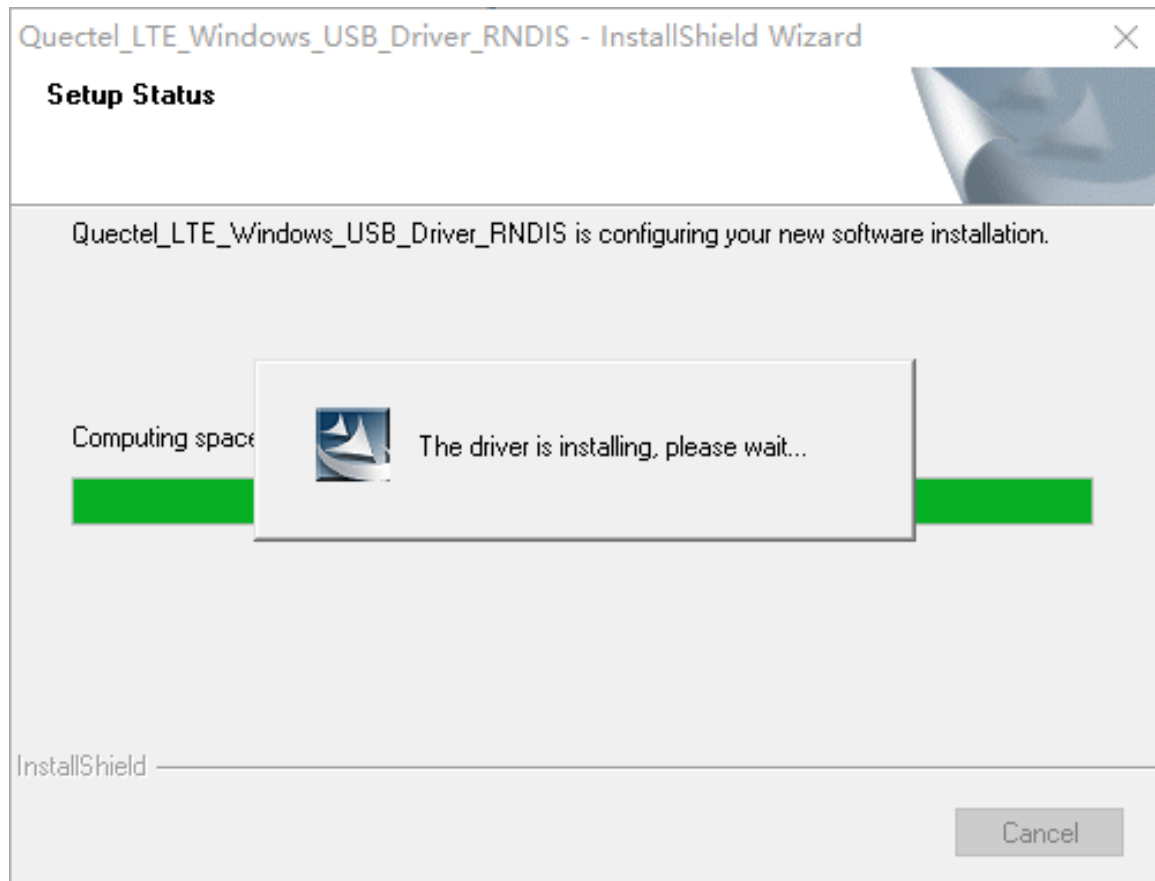


Figure 4: Installing

5. Complete Installation

After the installation is complete, the installer will present the window shown by the following figure, which indicates the driver has been installed successfully. Click **“Finish”** to complete the installation.

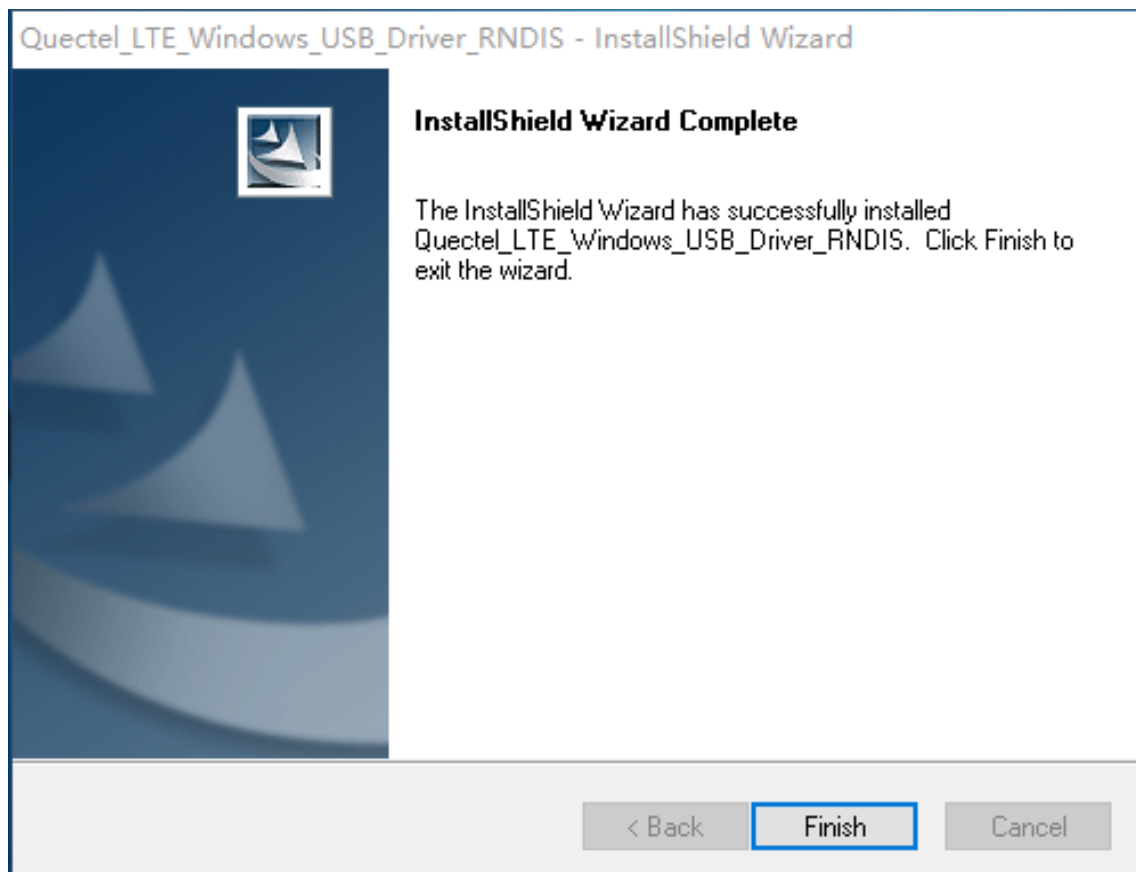


Figure 5: Complete Installation

2.3. Check on Installation Result

After the installation, the installation result can be checked on through “**Device Manager**”. “**Device Manager**” can be found in “**Hardware and Sound**” category of “**Control Panel**” of Windows systems.

- When the driver is successfully installed, the “**Device Manager**” on Windows 10 will show as below.

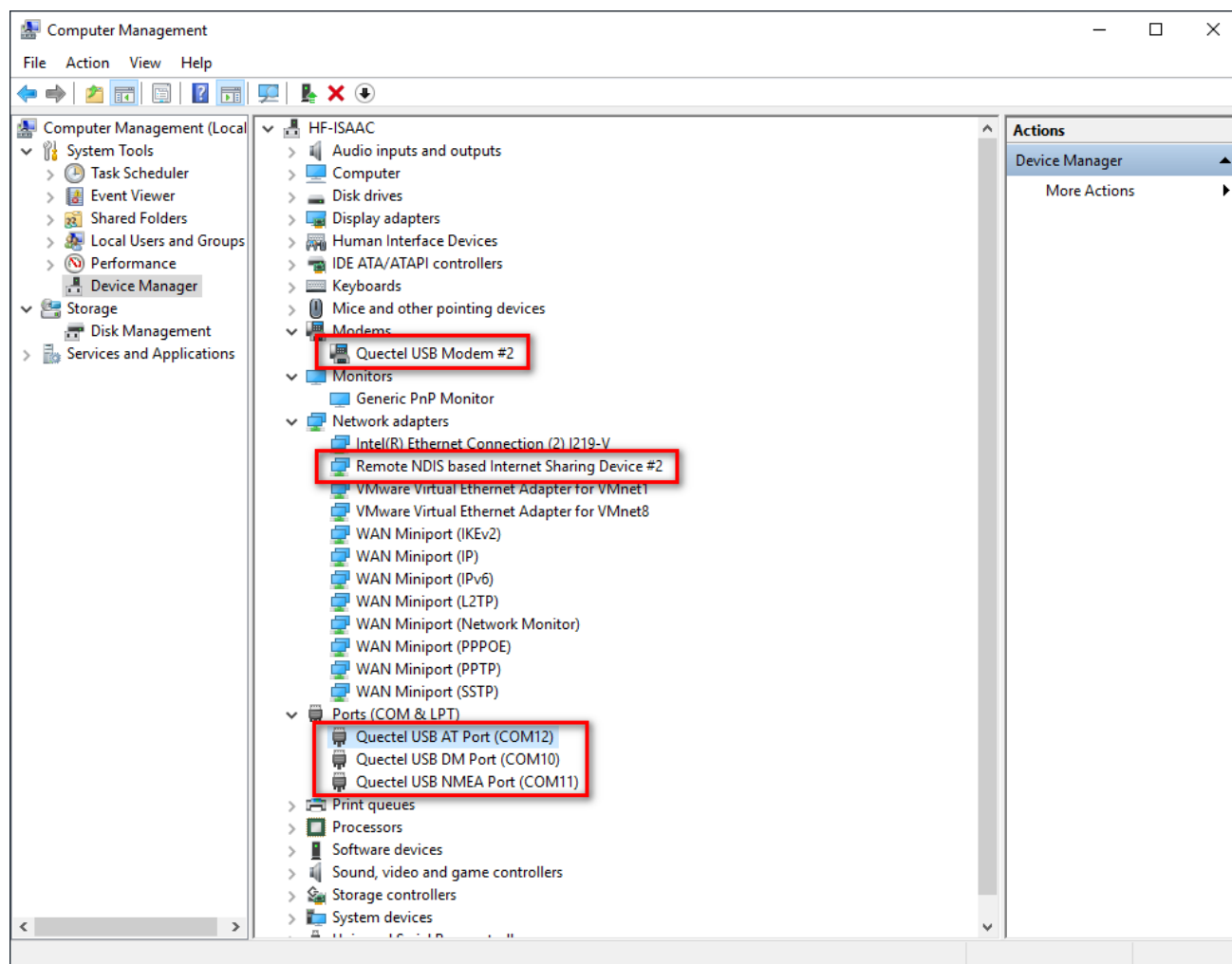


Figure 6: Device Manager When Driver Installation Succeeded

NOTE

The driver needs to match the mode of the NIC. Specific drivers should be installed corresponding to different network modes, otherwise, it may not work properly.

- If the driver is not installed or the installation failed, the “**Device Manager**” on Windows 10 will show as below (for reference only).

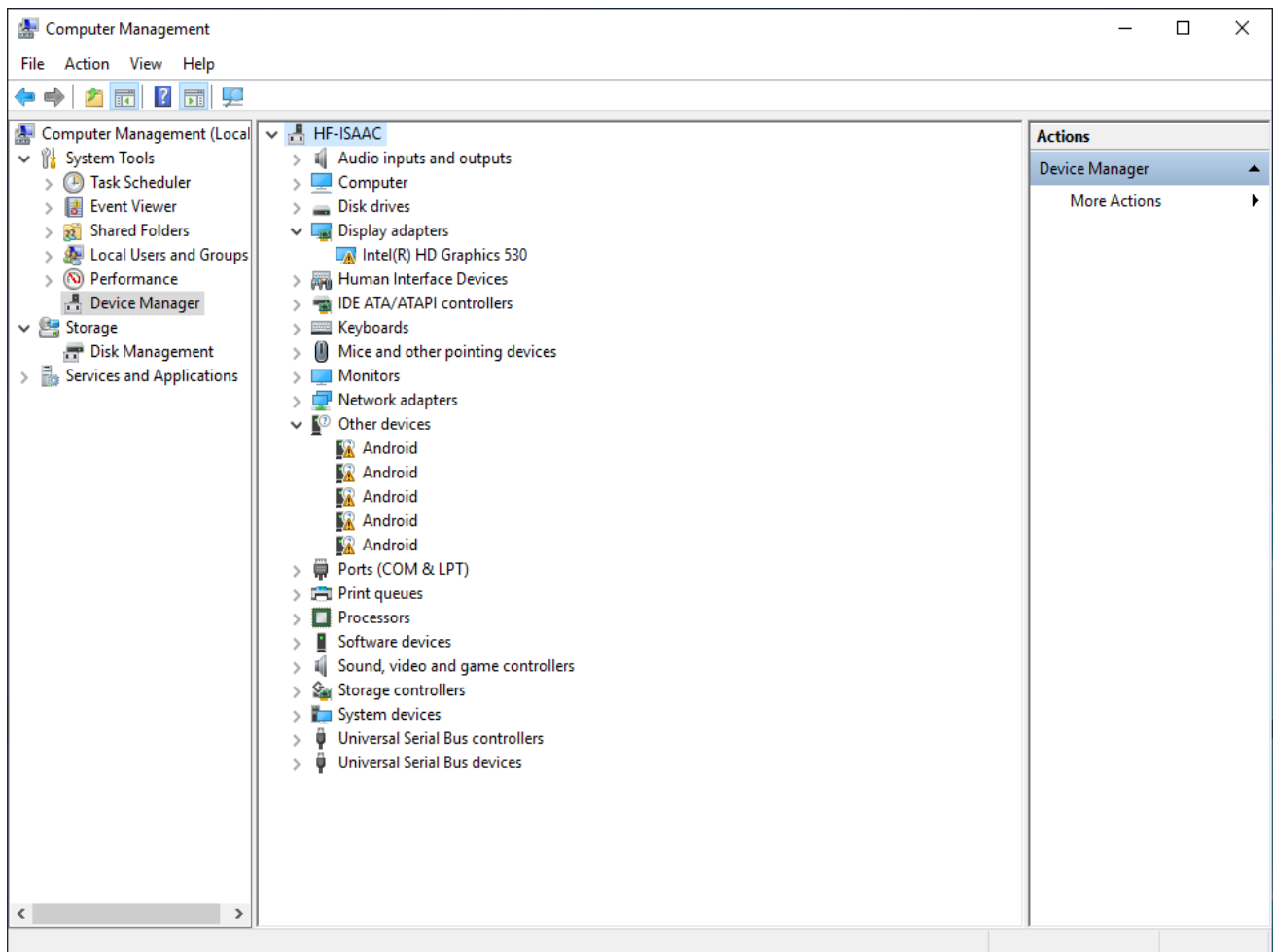


Figure 7: Driver not Installed or Installation Failed

2.4. Test

After the driver has been installed, users can test whether the driver works normally through QNavigator. AT command being transmitted normally through QNavigator indicates that the basic function of the driver works normally. EC25 module is used as an example in the following figure to demonstrate details of the test.

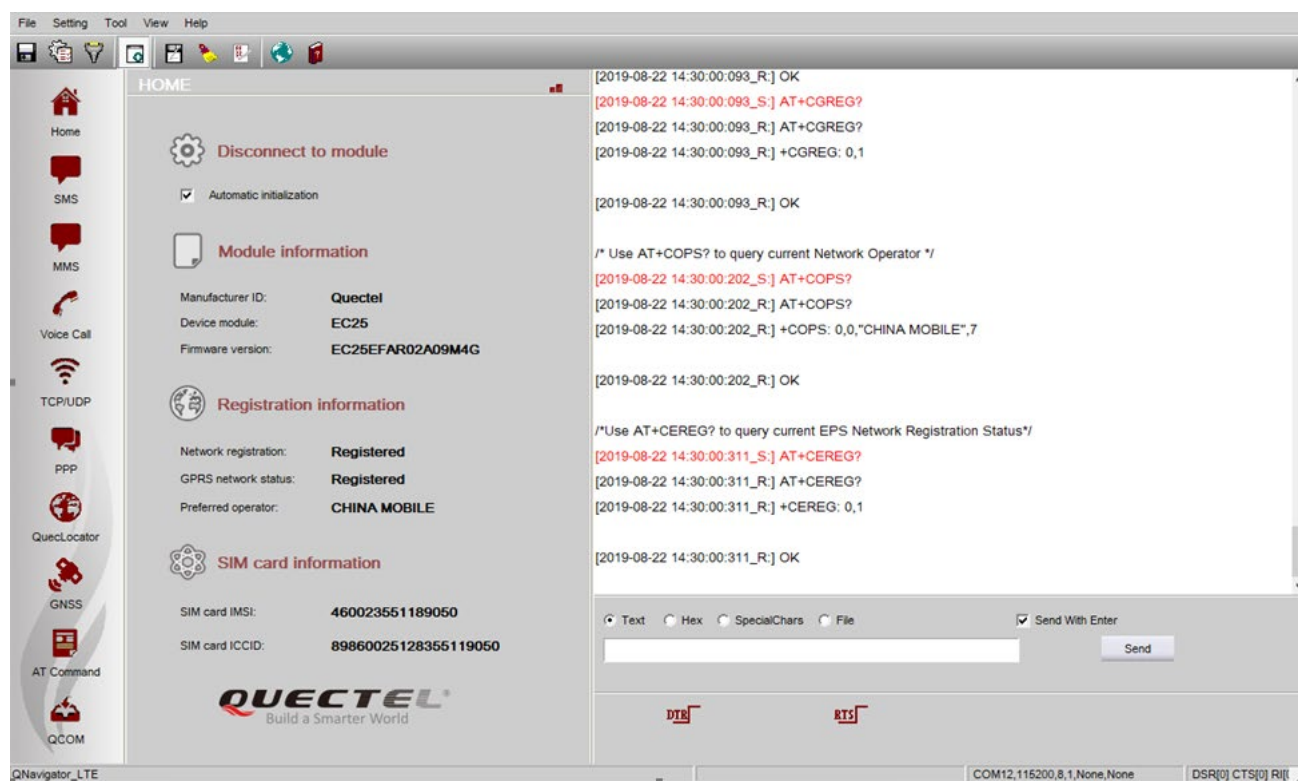


Figure 8: Module Test via QNavigator

NOTE

For detailed information about QNavigator, please refer to *Quectel_QNavigator_User_Guide*.

3 Uninstallation

This chapter mainly describes how to uninstall the driver. The uninstallation can be started through “Uninstall or change a program” on “Control Panel” in Windows system.

3.1. Uninstallation Procedures

1. Select the Driver from “Uninstall or change a program”

Enter “Control Panel” → “Programs” → “Uninstall or change a program” and select the installed driver. Then, click “Uninstall” in the window to start the uninstallation, as shown in the following figures.

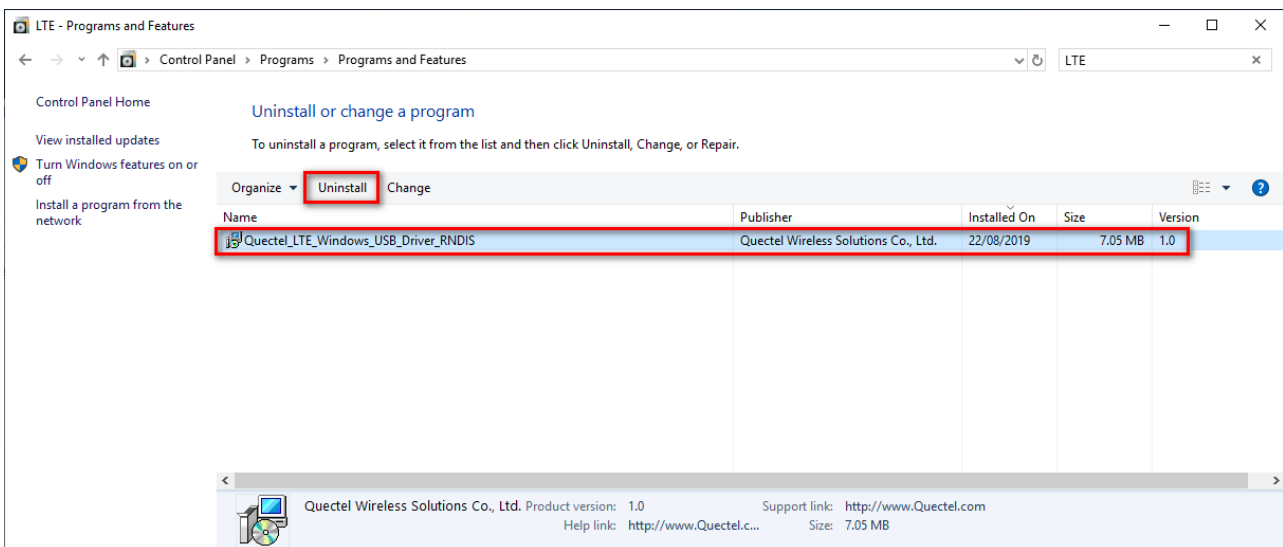


Figure 9: Uninstall the Driver

2. Uninstallation Preparation

After “Uninstall” is clicked, the window shown by the following figure will be displayed.

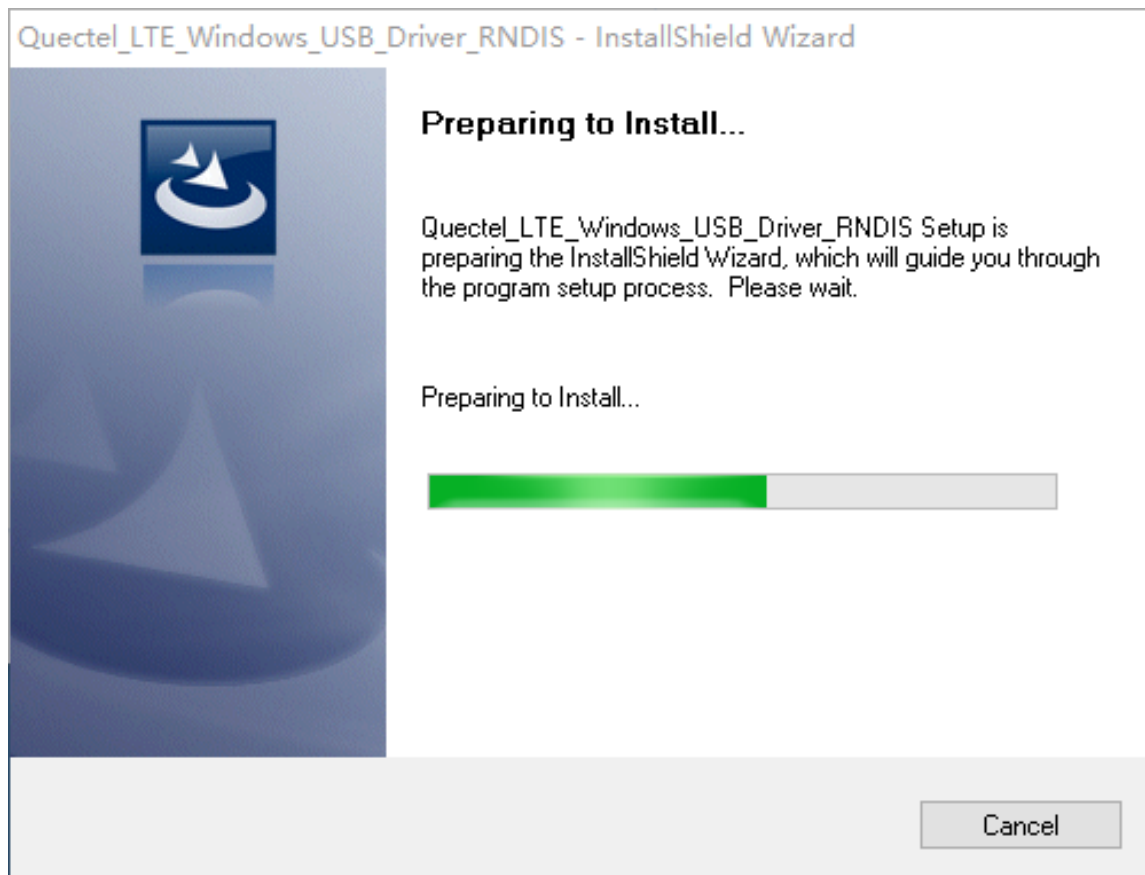


Figure 10: Uninstallation Preparation

3. Uninstallation Confirmation

Click "Yes" to confirm the uninstallation, as shown below.

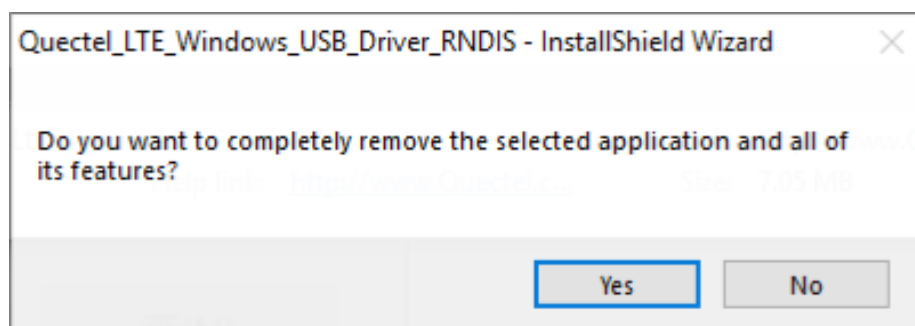


Figure 11: Confirm Uninstallation

4. Uninstalling

After confirmation of the uninstallation, the uninstallation will start. The uninstalling process may take some time, so, please wait until it is finished.



Figure 12: Automatic Uninstallation

Please wait patiently during the file removing process as shown below.

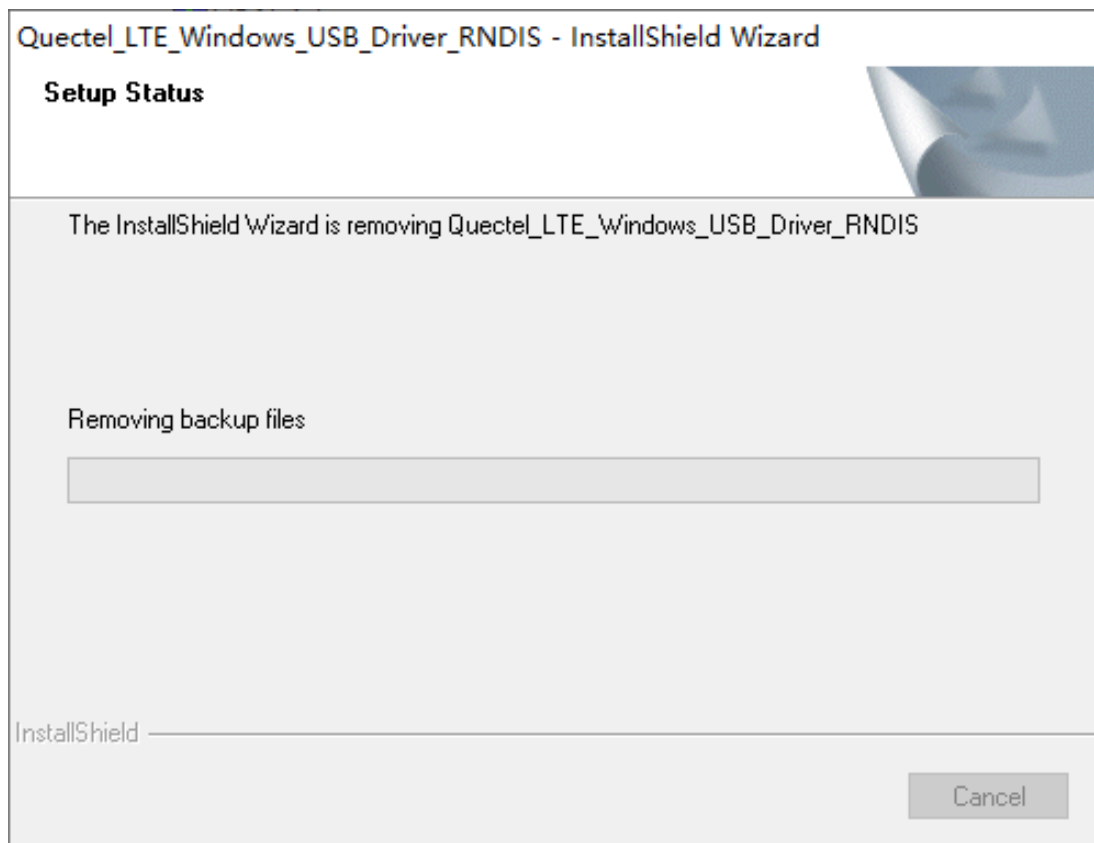


Figure 13: Driver Uninstallation Progress

5. Uninstallation Complete

After the uninstallation is complete, the installer will present the window shown by the following figure, which indicates the driver has been uninstalled successfully. Click **Finish** to finish the uninstallation.

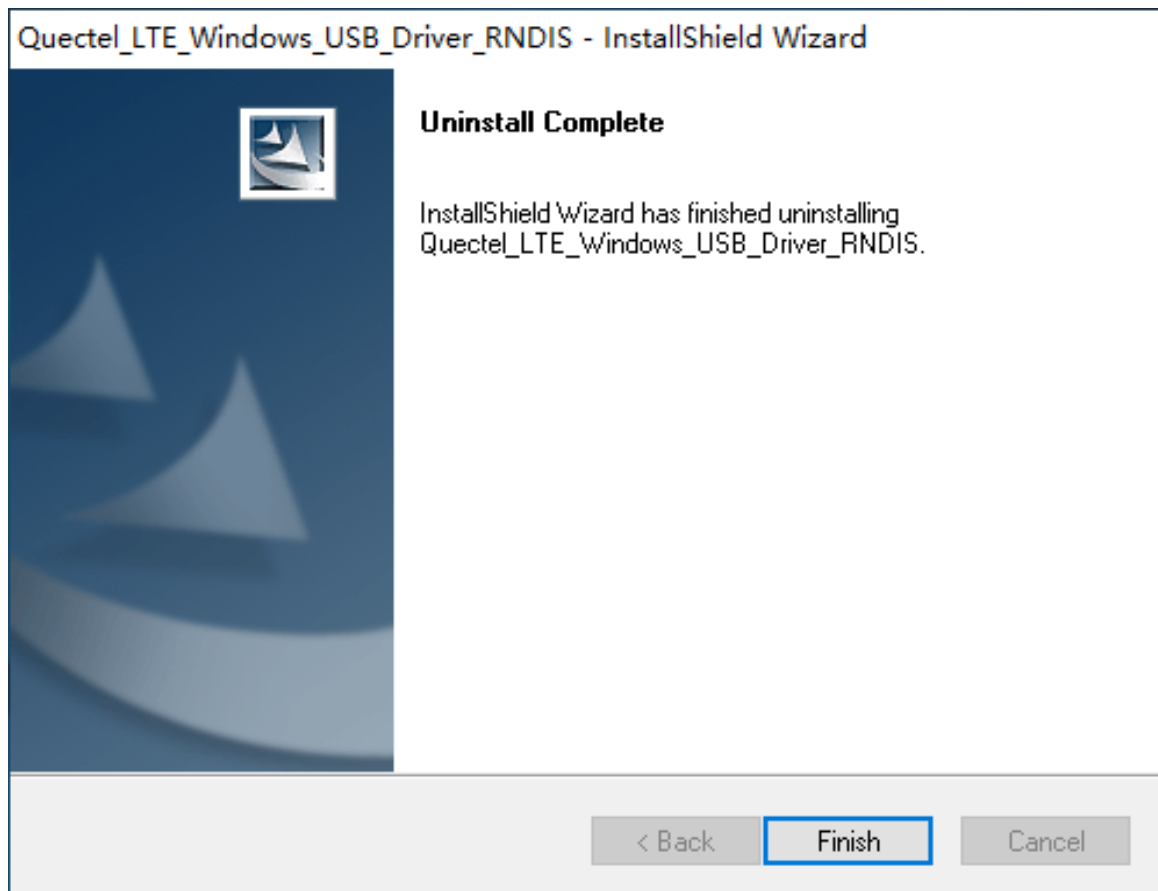


Figure 14: Uninstallation Complete

3.2. Check on Uninstallation Result

After the driver has been uninstalled successfully, the driver will switch to an uninstalled status. Users can check whether the driver has been uninstalled successfully through “**Computer Management**”, as illustrated below. The following information in the red square indicates that the driver has been uninstalled successfully.

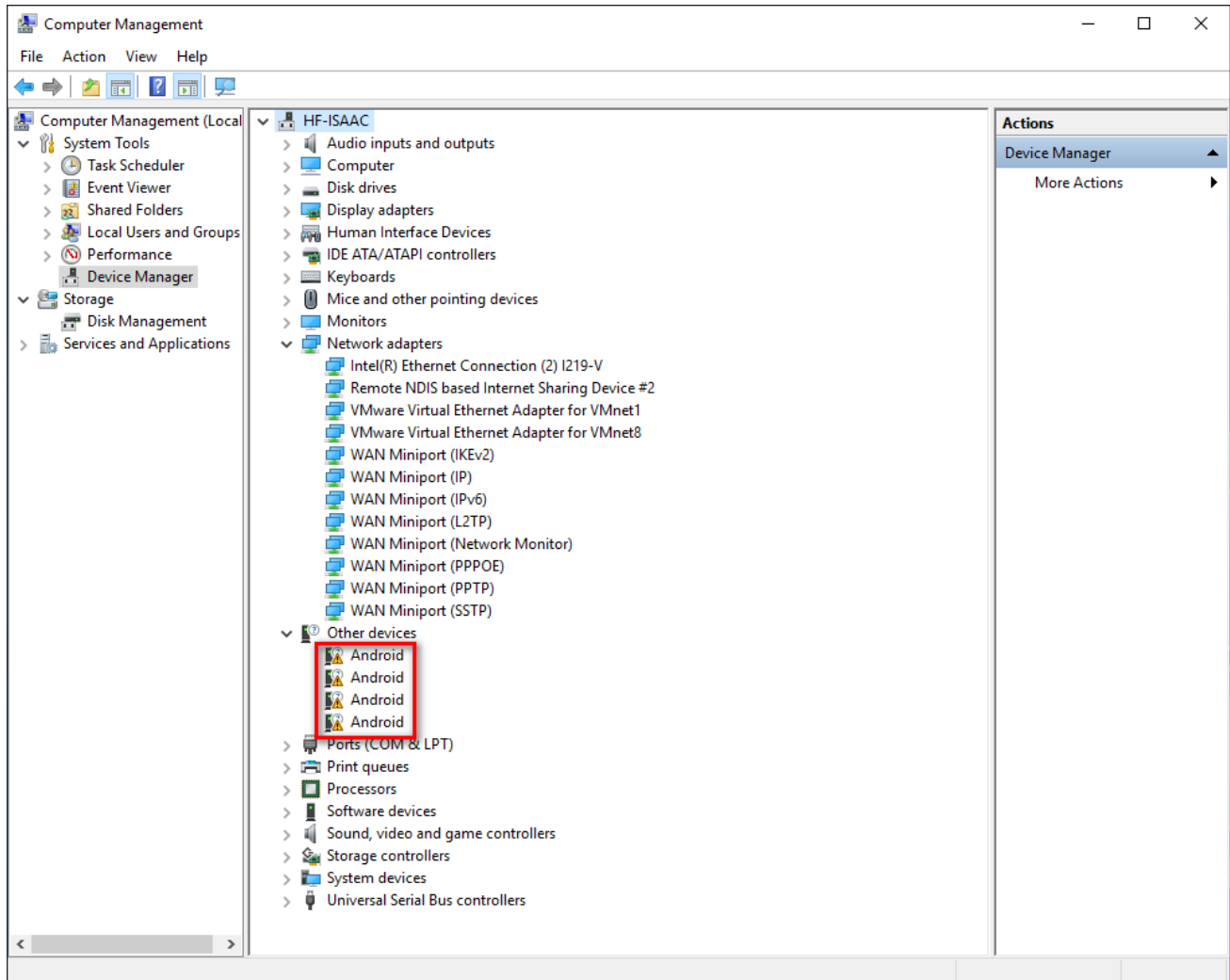


Figure 15: Device Manager When Driver Uninstallation Succeeded

4 Appendix A References

Table 2: Terms and Abbreviations

Abbreviation	Description
LTE	Long-Term Evolution
NIC	Network Interface Card (or Network Adapter)
PC	Personal Computer
RNDIS	Remote Network Driver Interface Specification
USB	Universal Serial Bus